

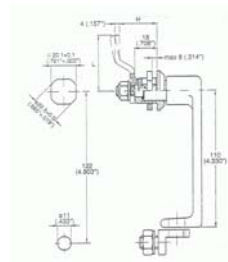


Padlockable Selection



Available styles:

Padlockable
Handles
1B-620, to -680

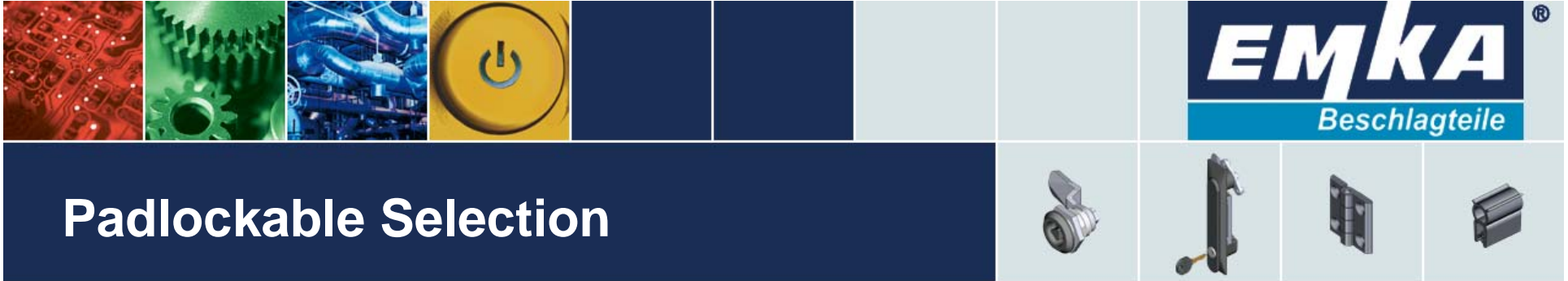


Available
with or
without a
defeater

Padlockable
Tool Operated
1B-680



Heavy Duty
10A-640,
With or without
defeater or key
lock, Zinc alloy
or stainless.



Select Handle:

From the catalog or http://www.emka.com/us_en/products.html (search by Page Number) the most suitable handle can be selected.

The wing knob is available in stainless on page 8A-240

[http://www.emka.com/no_cache/us_en/products/details/catalog/stainless-steel-program-4/locks-1/stainless-quarter-turn-for-padlocking-handle-4.html?tx_ritemkacatalog_pi1\[showSpecial\]=PDFPreview](http://www.emka.com/no_cache/us_en/products/details/catalog/stainless-steel-program-4/locks-1/stainless-quarter-turn-for-padlocking-handle-4.html?tx_ritemkacatalog_pi1[showSpecial]=PDFPreview)

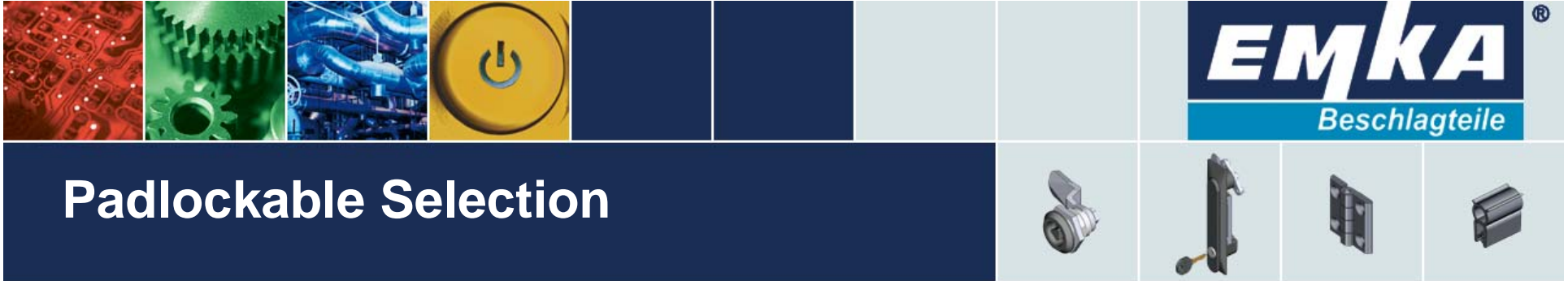
Select Padlockable, Tool Operated quarter turn :

Housing from 1B-680 [http://www.emka.com/no_cache/us_en/products/details/catalog/quarter-turns-4/standard-3/quarter-turn-for-padlock-1.html?tx_ritemkacatalog_pi1\[showSpecial\]=PDFPreview](http://www.emka.com/no_cache/us_en/products/details/catalog/quarter-turns-4/standard-3/quarter-turn-for-padlock-1.html?tx_ritemkacatalog_pi1[showSpecial]=PDFPreview)

Insert from 1B-140

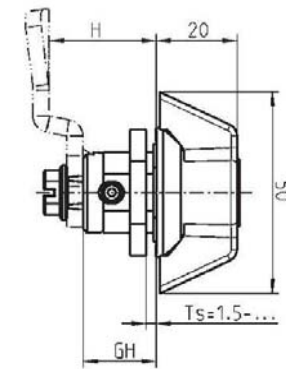
Cam from 1C-130 Note: GH = 22mm

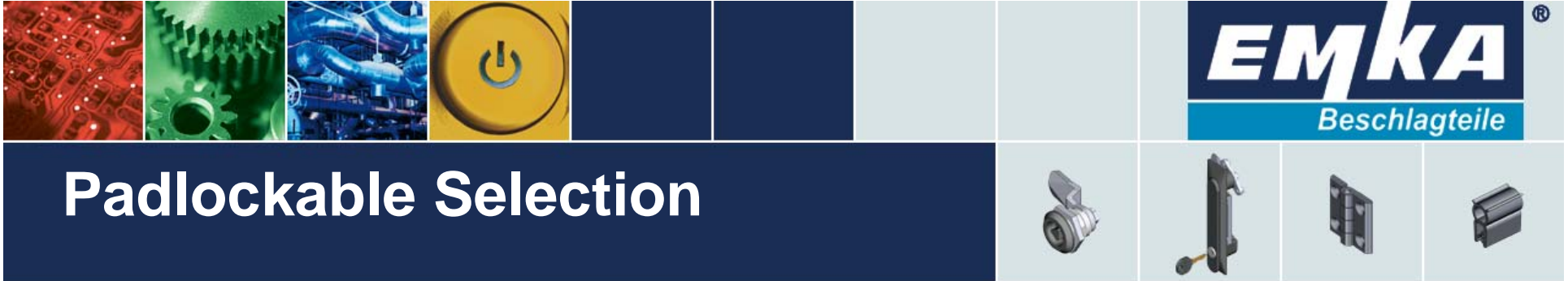
For NEMA 4, IP65, GR 487 order O-ring (1000-24) and seal (1000-23)



Cam – Calculate the required “H” dimension and note the “GH” number

- Go to page 1C-120, this is divided into three vertical sections for the three types of cam pictured. The cams in the left section allow an assembled latch to be inserted into the cut out, so these are used most often.
- Look down the left column to the “H” you need, look across to the relevant “GH” column (usually 18mm), this is the P/N you need. If the GH is not shown go to page 1C-130.





Sealing

Most handles and wing knobs are NEMA 4 / IP 65 as standard, see catalog page for details.

Ordering

- Example for a Black powder coated L handle and a cam to give an “H” of 24 mm used on a NEMA 4 enclosure, the P/Ns would be:
- 1000-U771
- 1000-14(Cam)

To have EMKA assemble the latch add line item 1000-991

This can be abbreviated to **1000-U771/14/991**