



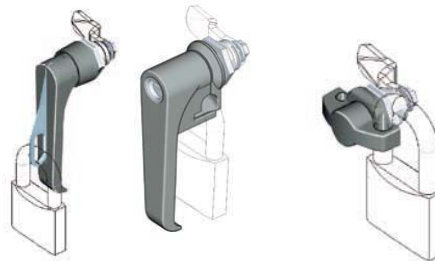
Handle & Wing Knob Selection



Available styles:



Standard series
1B-520 to -580



Padlockable
1B-620, to -680



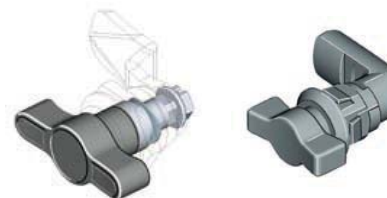
Low profile
1A-120, 1B-760



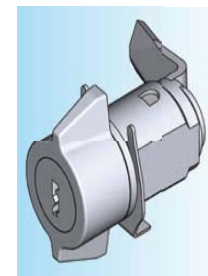
Defeater
1B-620



Small series
1A-140



Separate housing
1B-140, -720



Special
1E-520



Select Handle:

From the catalog or http://www.emka.com/us_en/products.html (search by Page Number) the most suitable handle can be selected.

For compression latch versions see 1B-230 & -232

If the "H required is 50mm or less and the door thickness is 8mm or less, use the standard housing.

Other considerations:

For simple, a low cost wing knob consider the 1000-U78 (p 1B-140) with a standard housing like the 1000-U45.

If handles get damaged in shipping consider Wing Knobs on 1B-720.

For 3-point latching use Zinc alloy or stainless handles



Handle & Wing Knob Selection

1. Select type

- Standard size – widest grip range, most options, see catalog pages 1B-520 to -580
- Small (1022) – fewer cams and other options good for very small enclosures. (1A-120)

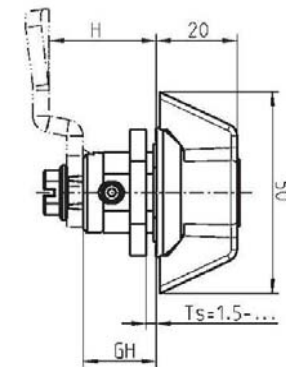
2. Select Material – if in doubt see “Materials pdf”

- Zinc Alloy, low cost with good strength, both chrome plated and powder coated are fine for most outdoor applications
- Stainless, for corrosion resistance or strength (316 for marine use)
- Glass reinforced polyamide (nylon) for low cost and corrosion resistance.
- If lowest cost is paramount look at PA 6 quarter turns on page 1B-160. Use short cams (on this page) to reduce stress



3. Cam – Calculate the required “H” dimension and note the “GH” number

- Go to page 1C-120, this is divided into three vertical sections for the three types of cam pictured. The cams in the left section allow an assembled latch to be inserted into the cut out, so these are used most often.
- Look down the left column to the required “H” look across to the relevant “GH” column (usually 18mm), this is the P/N you need.





Handle & Wing Knob Selection

4. Sealing

Most handles and wing knobs are NEMA 4 / IP 65 as standard, see catalog page for details.

For wing knobs with separate housings use a housing with integral gasket (with a “G” suffix) and an O-ring

5. Ordering

- Example for a chrome plated L handle and a cam to give an “H” of 24 mm used on a NEMA 4 enclosure, the P/Ns would be:
- 1000-U15-G
- 1000-14(Cam)

To have EMKA assemble the latch add line item 1000-991

This can be abbreviated to **1000-U15/14/991**